



**C.I. GROUP
PUBLIC COMPANY LIMITED
COMPANY PROFILE**

ABOUT CIG

C.I. Group Public Company Limited is a manufacturer of air-conditioning and refrigeration products with over 40 years of experience. We serve the leading brands in many countries around the world.

We have expanded our business to cover the design and installation of HVACR systems, construction projects, and other structural and utilities systems. We commit to serving our customers with our expertise with careful attention to engineering and technology development. We help elevate the holistic performance of buildings to another height of energy saving, safety, and aesthetics for our customers.

Established: 1983
Entered Stock Exchange Market: 2005

Registered Capital (update 2024):
\$57.2 Million / 2,006 M.THB

3 Manufacturing Locations in Thailand
Pathumtani (HQ) ~ 13,500 sq.m
Chonburi ~ 11,000 sq.m
Teparak ~ 4,870 sq.m
Employees ~ 650



จากผู้ผลิตก้าวสู่ผู้พัฒนา
โซลูชันระบบปรับอากาศ
และทำความเย็นควบคุม
ด้วยระบบ IoT

เราคือเบื้องหลังความสำเร็จ
ของแบรนด์ดังระดับโลก
มายาวนานกว่า 40 ปี

AMCI CERTIFIED
ISO 9001 2015 CERTIFIED
RoHS
D-COAT

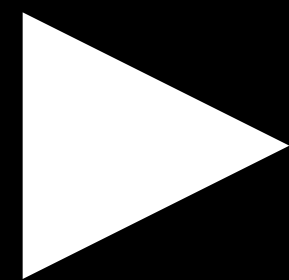
ALFA Model
CONDENSING UNIT | Compact Design
BETA | Vertical Stand
Unit Cooler | Slim-Type
BETA | Horizontal Stand
Unit Cooler | Single Discharge
DELTA | V Shape

บริษัท ซีไอจี กรุ๊ป จำกัด | www.cigblusolutions.com

EMPOWER WITH CARE



WHAT WE DO



Click to play the
"CIG Empower With Care"
on YouTube

เราารู้ดีว่าพลังงานเป็นปัจจัยสำคัญของชีวิต



VISION

Empower with Care to
ADVANCING SUSTAINABILITY

MISSION

Creating a lower-carbon future through eco-conscious M&E, HVAC/R and building material systems engineered for energy efficiency and sustainability

VALUES

Companion **Intellect** **Going Green***
sustainability requires collaboration innovation drives sustainability

DNAS

Dream big / Drive solutions / Deliver together

30+

Countries we currently serve

200%

Growth in New HVACR Products

2022



GLOBAL CHALLENGES



2 ZERO HUNGER 	6 CLEAN WATER AND SANITATION 	3 GOOD HEALTH AND WELL BEING 	12 RESPONSIBLE CONSUMPTION AND PRODUCTION
8 DECENT WORK AND ECONOMIC GROWTH 	9 INDUSTRY, INNOVATION AND INFRASTRUCTURE 	7 AFFORDABLE AND CLEAN ENERGY 	11 SUSTAINABLE CITIES AND COMMUNITIES



FOOD SECURITY
EMERGING INFECTIOUS DISEASES
NET ZERO CARBON
PM 1.0 PM 2.5 PM 10
SKILLS, EMPLOYMENT AND
GENDER PARTICIPATION

NET ZERO CARBON



OUR MISSION

ADVANCING SUSTAINABILITY



CIG คว่ำรางวัลระดับ

BRONZE MEDAL

**สำหรับแนวทางการปฏิบัติ
ด้านความยั่งยืน**

Certificate Number:
TGO CFO FY23-113



THAILAND GREENHOUSE GAS
MANAGEMENT ORGANIZATION
(Public Organization)



CERTIFICATE

Awarded to

C.I. GROUP PUBLIC COMPANY LIMITED

Company address verified: 1/1 Moo 7 Bangkoowad Road, Bangkoowad Amphoe Muang
Pathumthani 12000 Thailand

Thailand Greenhouse Gas Management Organization certifies that
the quantity of Greenhouse Gas of the above organization has been verified
by School of Energy and Environment University of Phayao
and found to be in accordance with the requirements of the standard detailed below.

Standard

TGO Guidance of the Carbon Footprint for Organization

Verification Period: [01/01/2021 - 31/12/2021]

Total Greenhouse Gas Emission (Scope 1&2): 2,871 tonCO₂e/year

Direct GHG emissions	1,312 tonCO ₂ e/year
Energy Indirect GHG emissions	1,559 tonCO ₂ e/year
Other Indirect GHG emissions	10,574 tonCO ₂ e/year

The agreed level of assurance is: Limited, at materiality of 5%

Registration Date: 28 February 2023

Mr. Kiatchai Maitriwong
Executive Director

Thailand Greenhouse Gas Management Organization (Public Organization)

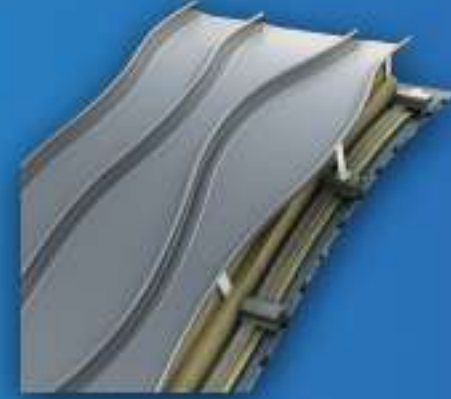
GROUP BUSINESSES



HEAT Exchanger engineering and manufacturing



HIGH PERFORMANCE BUILDING MATERIALS



Kingspan Strategic Partnership for distribution, desian and installation



HVACR Devices / Design and Installation



ARII IoT / SMART Monitoring and Control Solutions



Design and Installation of waterworks, fire safety and HVACR systems



HVACR PRODUCTS

M&E SOLUTIONS

CUSTOMERS WE PROUDLY SERVE



HVACR Business



Construction Business



HVACR PRODUCTS



HVACR PRODUCTS

At CIG BluSolutions, we provide the best technology along with the best team to keep up the good work as well as the pace of the world.

- Heat Exchangers
- Refrigeration units
- Air Handling Units
- Air Purifiers
- Smart IoT Solutions



KEY PRODUCTS

REFRIGERATION



Air Cooled Condenser



Condensing Unit



Unit Cooler



Unit Cooler - Slim Type



Unit Cooler - Dual Discharge



Stainless Steel Unit Cooler



**Cold Storage Big Scale
Chilled Distribution Center (CDC)
Frozen Distribution Center (FDC)**



Hyper Market / Convenience Store



Cold Storage Small / Medium Scale



Factory

KEY PRODUCTS

AIR CONDITIONING & PURIFIERS

AHU AND AIR PURIFIER

MONITORING & CONTROL



AHU Double skin



AHU Single Skin



Air Purifier 2300 CFM



Air Purifier 450 CMH



Arii Cloud Platform Monitoring & Control



Shopping mall



**Commercial Building/
Hotel**



**Healthcare / Clinic
Lab / Cleanroom**



Factory

TRANSPORTATION

OCEAN



CIG supply coils to reefer container for 10 years totally more than 400K containers

REEFER CONTAINER

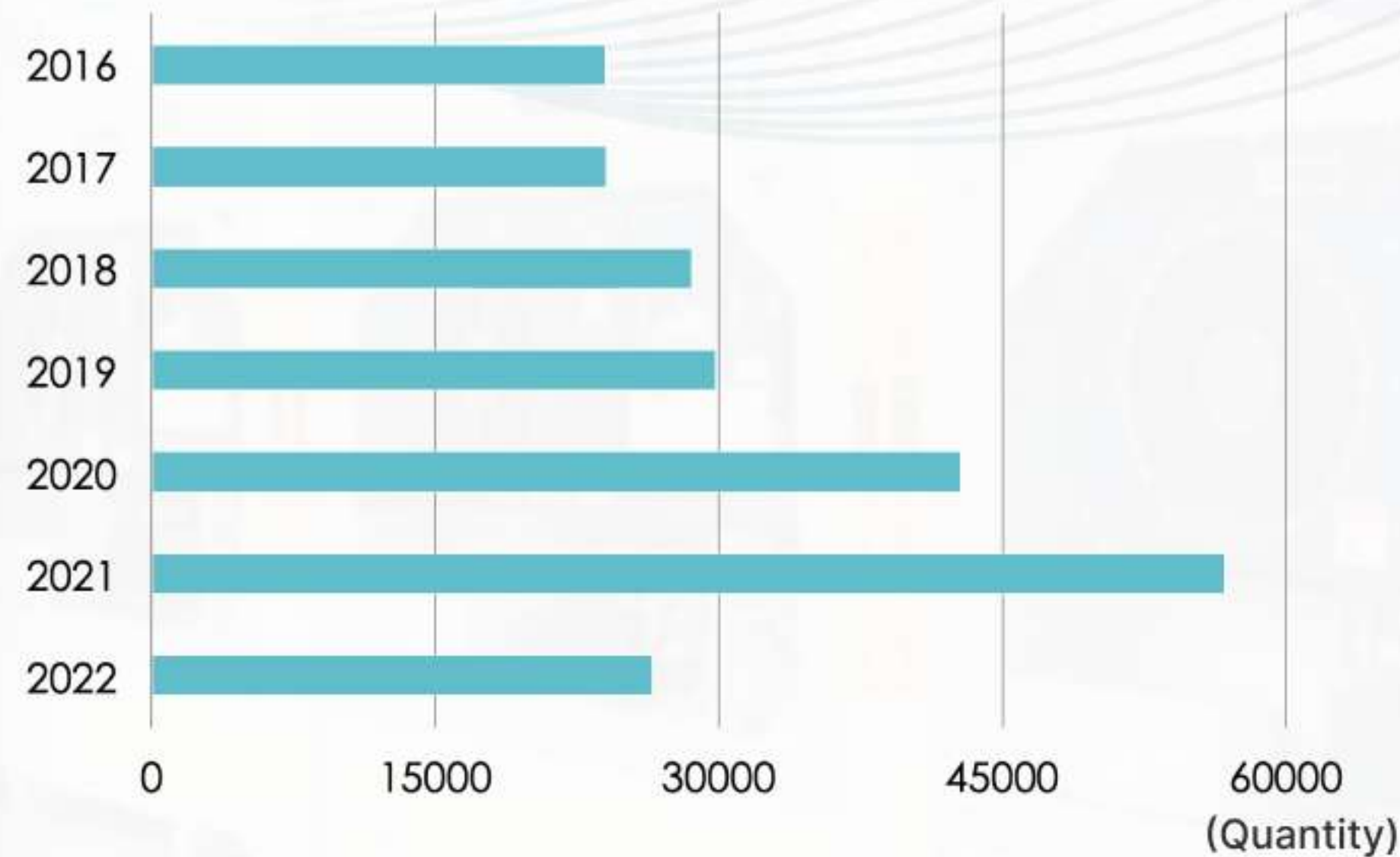
Carrier Transicold PL, Singapore



Harsh Environment
and Heavy Duty



Evaporator coils supplied in 2016 - August 2022



- Since 2012, we supplied the evaporator coil to Carrier Transicold PL, Singapore.
- The Reefer container works in extreme conditions such as corrosion, moisture, humidity, impact, temperature variations, and risk of system shut down that will damage all of the goods within
- We are the “Q+ Level3” vendor that can supply to Carrier plants all over the world.

TRANSPORTATION RAIL



- CIG supply coils to air-conditioner for train

ROAD



Eberspächer
Germany, Poland and
India



- CIG supply coils to bus air-conditioner manufacturers in Europe, India, Australia and Malaysia
- Since 2009, we supplied Evaporator Coil, Condenser Coil and Hot Water Coil (heater) to the Eberspächer - Thermal management for buses in Poland and India.



PASSIVE DISPLACEMENT COOLING SOLUTIONS



บริษัท ซี.ไอ.กรุ๊ป จำกัด (มหาชน)

email: care@cigblusolutions.com | Tns 092 463 2366 และ 02976 5290

CERTIFICATES





Certificate of Product Ratings

AHRI Certified Reference Number : 202196755 Date : 09-20-2018 Model Status : Active

Brand Name : CIG

Model Number : 3/8x1x0.75 Slit/C/W0.375/1.000x0.750/Smooth/Plate-Configured/Slit fin for Plate-Configured

Coil Line Designation : 3/8x1x0.75 Slit

Function : Cooling (C)

Fluid Type : Water (W)

Tube Outside Diameter : 0.375

Tube Spacing across Coil Face (Stf) X Tube Spacing between Coil Rows (Str) : 1.000 X 0.750

Tube Internal Construction : Smooth

Fin Configuration : Plate-Configured

Rated as follows in accordance with the latest edition of AHRI Standard 410 Forced-Circulation Air-Cooling and Air-Heating Coils and subject to rating accuracy by AHRI-sponsored, independent, third party testing:

Software Name : Chilled Water Cooling Coil Schedule

Software Version : Ver 1.0



*"Active" Model Status are those that an AHRI Certification Program Participant is currently producing AND selling or offering for sale, OR new models that are being marketed but are not yet being produced. "Production Stopped" Model Status are those that an AHRI Certification Program Participant is no longer producing BUT is still selling or offering for sale. Ratings that are accompanied by WAS indicate an involuntary re-rate. The new published rating is shown along with the previous (i.e. WAS) rating.

DISCLAIMER
 AHRI does not endorse the product(s) listed on this Certificate and makes no representations, warranties or guarantees as to, and assumes no responsibility for, the product(s) listed on this Certificate. AHRI expressly disclaims all liability for damages of any kind arising out of the use or performance of the product(s), or the unauthorized alteration of data listed on this Certificate. Certified ratings are valid only for models and configurations listed in the directory at www.ahrirectory.org.

TERMS AND CONDITIONS
 This Certificate and its contents are proprietary products of AHRI. This Certificate shall only be used for individual, personal and confidential reference purposes. The contents of this Certificate may not, in whole or in part, be reproduced, copied, disseminated, entered into a computer database, or otherwise utilized, in any form or manner or by any means, except for the user's individual, personal and confidential reference.

CERTIFICATE VERIFICATION
 The information for the model cited on this certificate can be verified at www.ahrirectory.org, click on "Verify Certificates" link and enter the AHRI Certified Reference Number and the date on which the certificate was issued, which is listed above, and the Certificate No., which is listed at bottom right.

©2018 Air-Conditioning, Heating, and Refrigeration Institute

CERTIFICATE NO.: 131815303697050654



SINGAPORE GREEN BUILDING PRODUCT CERTIFICATE

AWARDED TO
YiTac(S) Pte. Ltd.

2 Woodlands Sector 1
 #03-04, Woodlands Spectrum 1
 Singapore 738068

FOR THE PRODUCT
Passive Displacement Ventilation

PRODUCT BRAND
twenty80

PRODUCT MODEL
twenty80 CW – CIG

THE PRODUCT HAS BEEN ASSESSED ACCORDING TO THE ASSESSMENT CRITERIA OF SINGAPORE GREEN BUILDING PRODUCT CERTIFICATION SCHEME. IT HAS BEEN AWARDED THE RATING:



 Director
 SGBC Pte Ltd

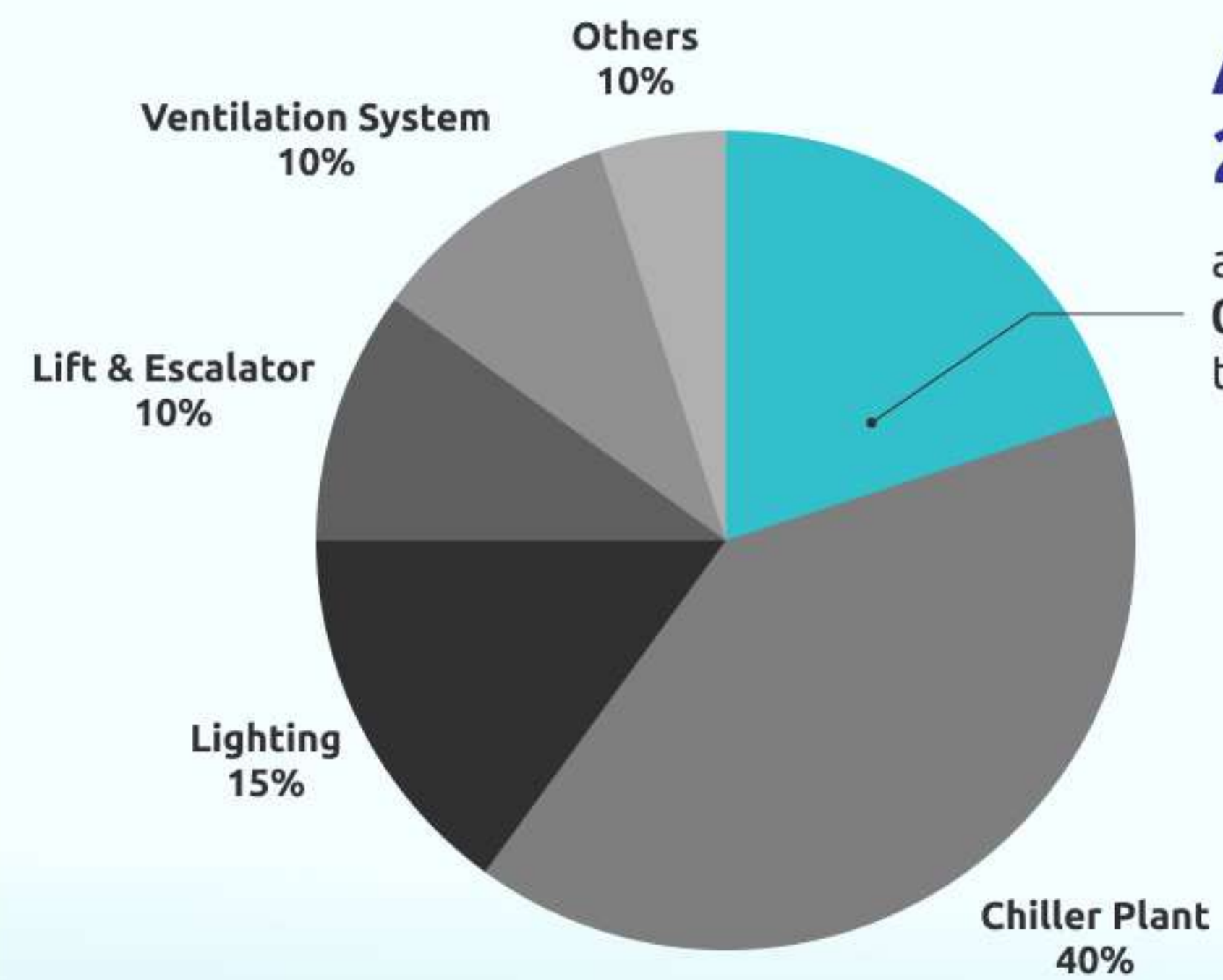


Certificate Number	Original Issue Date	Revised Date	Valid Till
SGBP 4668	23 February 2022	-	22 February 2024

✓Good ✓✓Very Good ✓✓✓Excellent ✓✓✓✓Leader
 The use and reliance on this certificate is subject to the terms and conditions of the Singapore Green Building Product Certification Scheme. Revised certificates may also be issued at the discretion of the Council. The certification status may be verified at the Singapore Green Building Council website (www.sgbc.sg).

WE CAN SAVE 20% OF ENERGY USAGE FORM THE AIR SIDE

BUILDING ENERGY USAGE
in Traditional Chiller System



Air side 20%

approximately consumes
0.28 KW/RT or up to 20% of
total building energy



- Forced convection system requires large plant room ceiling space for equipment & Installation (AHI, FCU, Ductwork)
- Unnecessary Cooling / Unintended cooling

PASSIVE DISPLACEMENT COOLING SYSTEM

7-12°C

AIR FALL SHAFT

NATURAL CONVECTION AIR FLOW

26°C

Heat Loads

- Occupants
- Lightings
- Computers
- Electronic Devices
- Machines



24°C

16-18°C

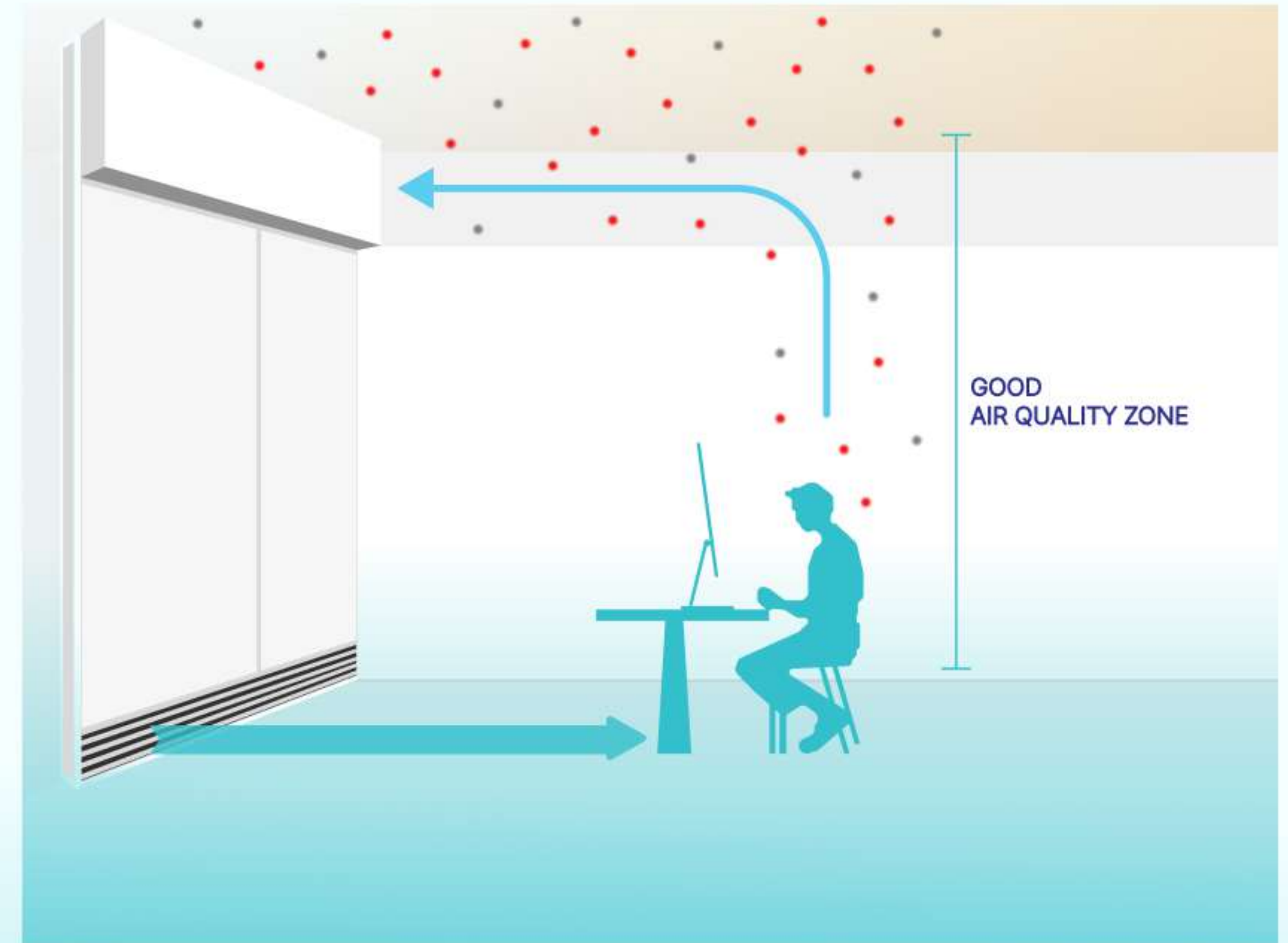
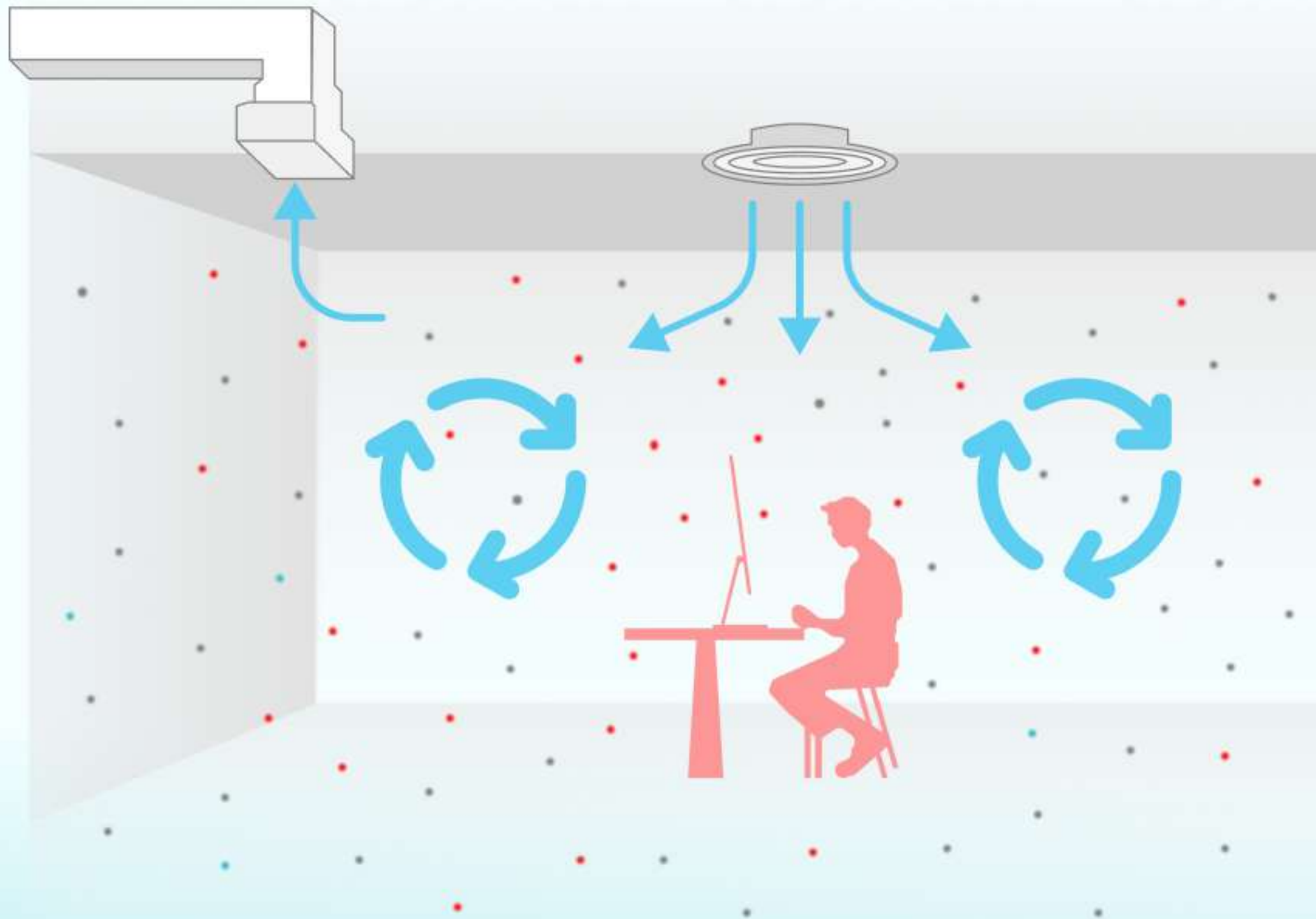
AIR FLOW SPEED: 0.6m/s to 1.2 m/s

20°C

5 to 7 meters

AIR QUALITY COMPLY WITH GREEN AND WELL HEALTH BUILDING

- Corona Virus - 0.125 micron
- Particular Matter: PM10, PM2.5



BENEFITS OF PASSIVE DISPLACEMENT COOLING



No mechanical fan.

Zero Electrical power consumption.



No Air Duct

reducing building floor to ceiling height



Pumping Power Savings

Operate with low chilled water flow rate

Minimum maintenance

No fans, air filters, no cleaning

Low noise

for spaces that requires low air draft and low noise tolerance

Explosion proof

Can be used for fire explosion proof rooms

Design Possibilities

Integrates easily with interior design so it provides cooling without being seen



FOR GREEN BUILDING

- Energy Efficiency
- Eco-Friendly
- Healthy Indoor Environment
- Design Freedom

FOR WELL HEALTH BUILDING

- Occupant Well-Being
- Energy Efficiency
- Design Integration
- Quiet Operation

COMPLETED PROJECTS



NTU SOUTH SPINE



LECTURE THEATRE (353 PAX)



- No of coils:
- 22 coils
 - Providing 50.6 kW of total cooling capacity
 - Coil size: 1200mm (L) x 164mm (W) x 550mm (H)



Singapore Institute of Technology (SIT) centralised campus in Punggol

838 PDV Coils



- The campus comprises of:
- Indoor Sports Hall
 - Tutorial rooms



AIR-COOLED CHILLER FOR EV BOAT



Air-Cooled Chiller
for Fast Charge
of EV Boat



CHILLER FOR FERRY BATTERY CHARGING

CHILLER UNIT FOR EV CHARGER



Project
Chiller for Ferry Battery Charging

Customer :
Energy Mahanakhon

Project Scope :
Chiller Unit for EV Charger



U CHU LIANG AND HSBC BUILDING AHU REPLACEMENT

AHU REPLACEMENT



Project
U Chu Liang and HSBC Building
AHU Replacement

Customer :
IdealMc and D9

Project Scope :
AHU Replacement

Project Value: 55 M. THB





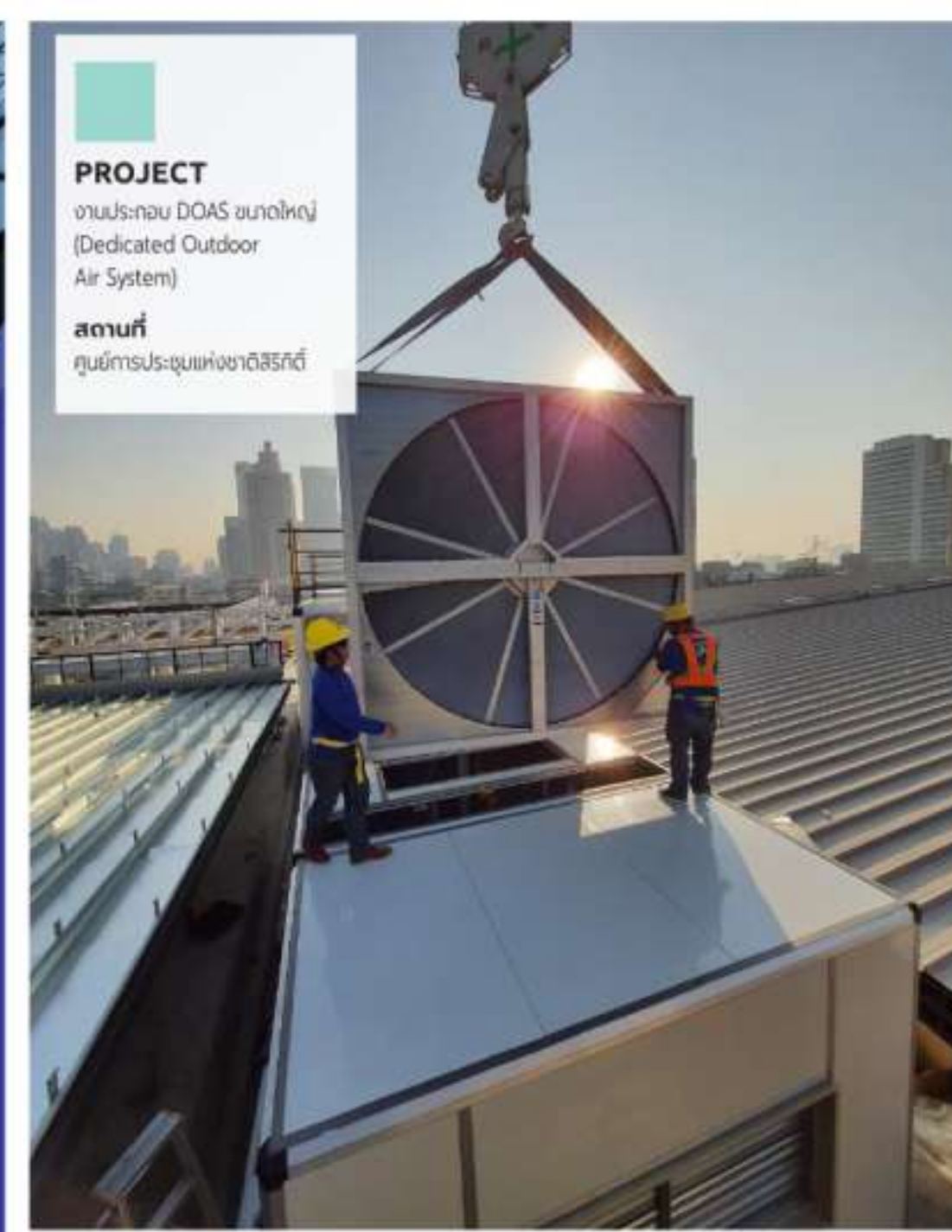
CIG M&E Solutions

บริการออกแบบและติดตั้งระบบเครื่องปรับอากาศ และทำความเย็นระบบระบายอากาศ แบบครบวงจร โดยทีมวิศวกรผู้เชี่ยวชาญดูแลอย่างมืออาชีพ

Line: @CIGCare
Hotline CIG Care: 092 463 2366



PROJECT
งานประกอบ DOAS ขนาดใหญ่
(Dedicated Outdoor
Air System)
สถานที่
THE TARA CPALL



PROJECT
งานประกอบ DOAS ขนาดใหญ่
(Dedicated Outdoor
Air System)
สถานที่
ศูนย์การประชุมแห่งชาติสิริกิติ์



PROJECT
Renovated Coil For FCU
สถานที่
Michelin Siam Co., Ltd.
(Phra Pradaeng)

ENGINEERING SUPPORT & DESIGN



Ventilation System



A/C and Refrigeration System



Other M&E Systems

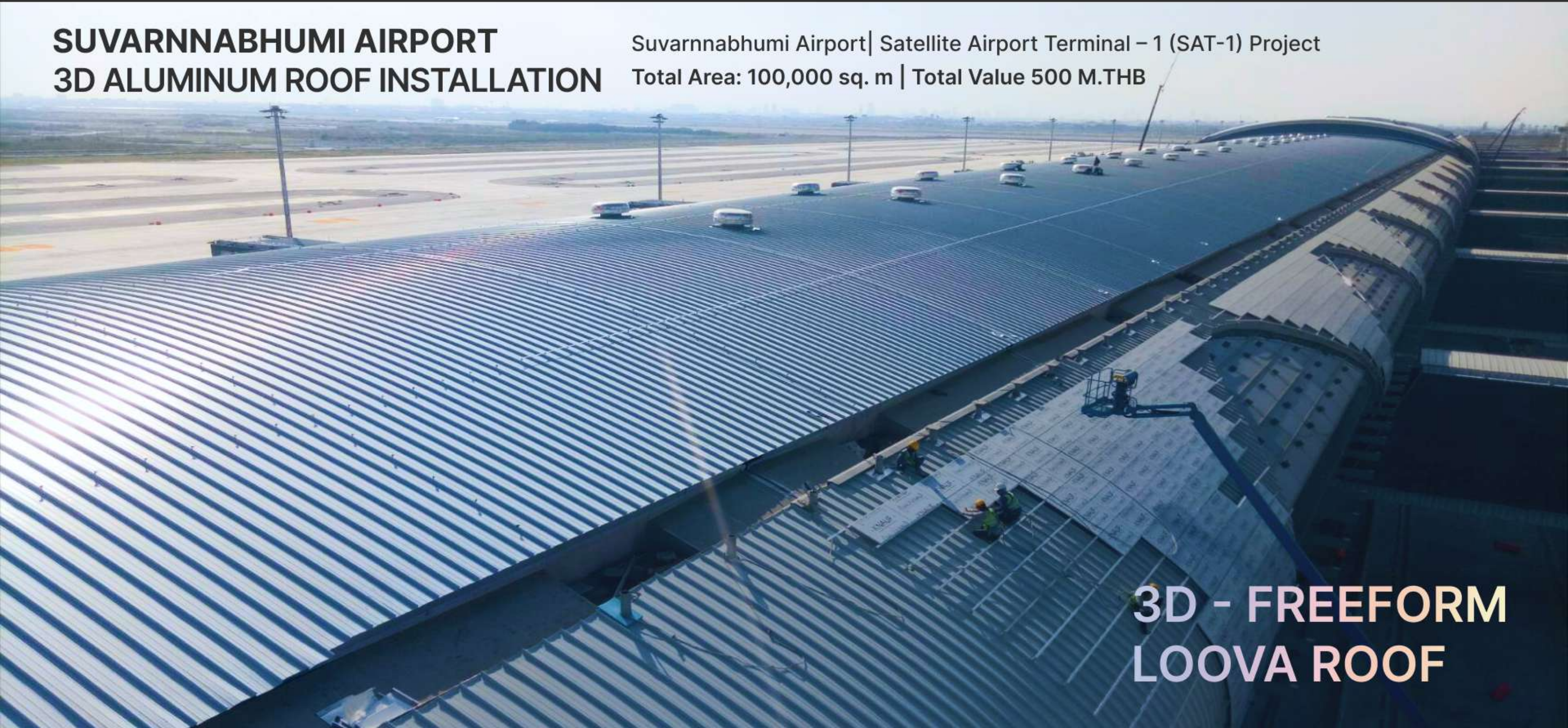


Fire Sprinkler System

SUARNNABHUMI AIRPORT 3D ALUMINUM ROOF INSTALLATION

Suvarnnabhumi Airport | Satellite Airport Terminal – 1 (SAT-1) Project
Total Area: 100,000 sq. m | Total Value 500 M.THB

3D - FREEFORM
LOOVA ROOF





CIG History

- **1983**
 CIG was founded as a heat exchanger manufacturer
- **2005**
 CIG was listed in the Stock Exchange of Thailand
- **2015**
 Became Kingspan's Thailand Strategic Partner & Authorized Distributor
- **2019**
 Awarded 100,000 sq.m 3D- Shaped Aluminum freeform roof project of Suvarnabhumi Airport (Supply and install)



CIG is determined to be the expert in installing and supplying materials for high performance buildings that prioritize energy saving, aesthetics, contemporary design, as well as lightning-fast installation.

C.I. Group Public Company Limited, with over 40 years of experience in manufacturing air conditioning and refrigeration products, CIG has been recognized by leading brands across the world. Currently, we have expanded our business to cover design and installation of HVACR systems, construction projects, and other structural and utility systems.



Established in 1983

Registered Capital :
 \$20.3 Million / 648 MB
 Entered Stock
 Market : 2005



3 Manufacturing Locations in Thailand

Pathumtani (HQ) ~ 13,500 sq.m
 Chonburi ~ 11,000 sq.m
 Samut Prakan ~ 4,870 sq.m
 Employees ≈ 850

We are committed to elevating building efficiency in energy saving, safety, and aesthetics in order to create sustainable and outstanding buildings with innovative future technologies.

Empower with Care

360° Service & Support

Design, Technical, Commercial & Construction Assistance



1 Design

- Design and optimization for project requirements and challenges

2 Project Overview

- Brief and scope

3 Optimize Solutions

- Building code(s) compliance
- Structural, thermal, air-tightness, acoustic, fire, durability, and other performance requirements
- Envelope solutions and structure integration drawings and system specifications
- Testing, accreditation and certification
- Energy efficiency optimization and measures, Environment and sustainability rating
- Cost plan inputs

4 Procurement & Programme

- Turn key solutions
- Specialist installer selection, training and on-site support
- Materials submission
- On-site build methods and procedures

5 Project Delivery

- Project management and field support teams
- On/off-site 2D and 3D CNC manufacturing
- Logistics and materials delivery program

6 Project Completion

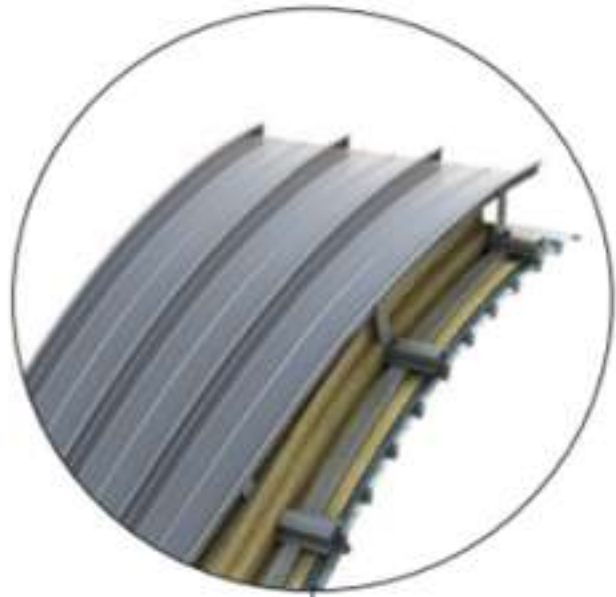
- Post-completion documentation and drawings
- Guaranteed by CIG

Energy Saving Solutions



High Performance
Building Materials

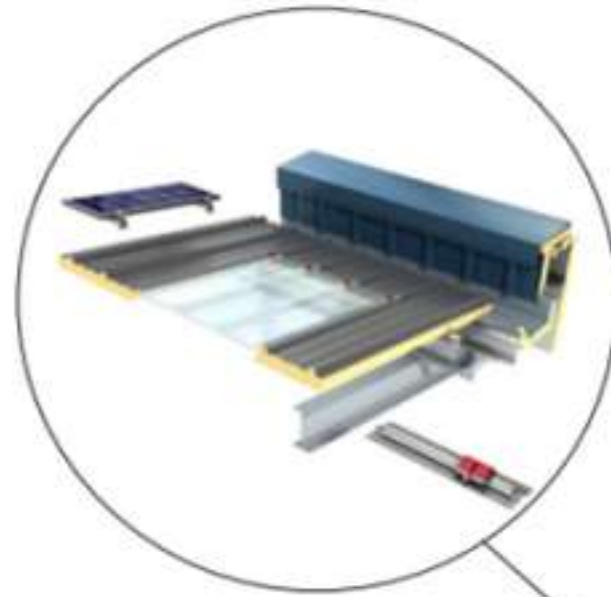
3D freeform aluminum roof



High performance
Insulated architectural wall



Insulated roof integrated
with daylight and solar energy



Solid aluminum façade



Arii IoT / smart monitoring
and control solutions



HVACR products /
design and installation



Accreditations



Fire and environment safe

HIGH
PERFORMANCE

SAFE

ENERGY
SAVING

AESTHETIC

SMART

Heat exchanger
Engineering and
Manufacturing



HIGH PERFORMANCE BUILDING PRODUCTS



High Performance
Building Materials



LOOVA ROOF



LOOVA EXTERNAL PANEL



LOOVA INTERNAL PANEL



INSULATION



Nano Insulation coating

HIGH PERFORMANCE BUILDING PRODUCTS



High Performance
Building Materials



Decoration



**LOOVA FACADE /
PERFORATE**



Membrane



**PROTECTION
SYSTEM**



**Lime Scale Remover
(Flow X)**

HIGH PERFORMANCE BUILDING PRODUCTS



High Performance
Building Materials



HVAC/R Products

- Heat Exchangers
- Refrigeration units
- Air Handling Units
- Air Purifiers
- Smart IoT Solutions

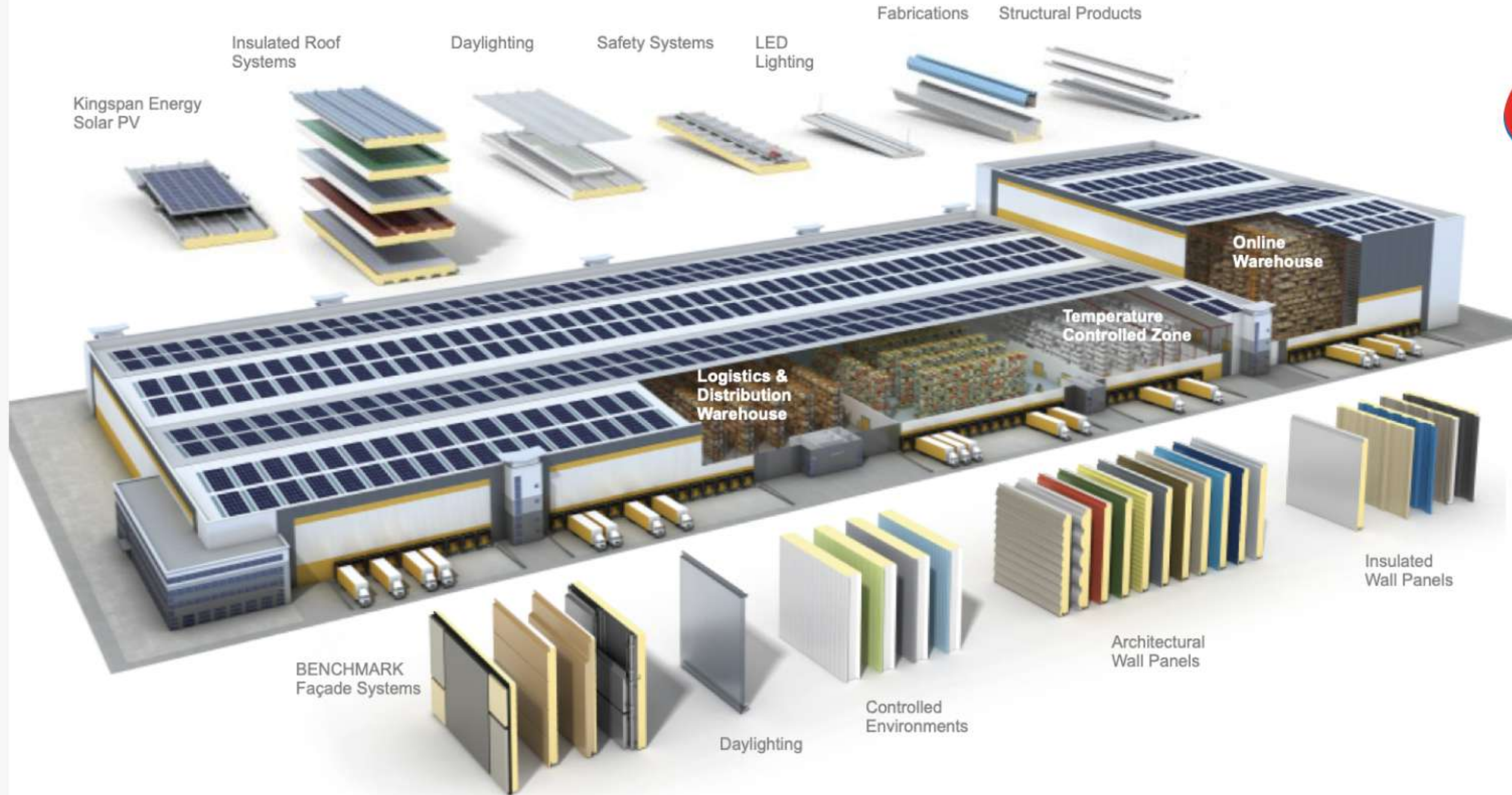
PDV

Passive Displacement Ventilation

ENVELOPE SYSTEM AND SOLUTIONS



High Performance
Building Materials



OUR PRODUCTS



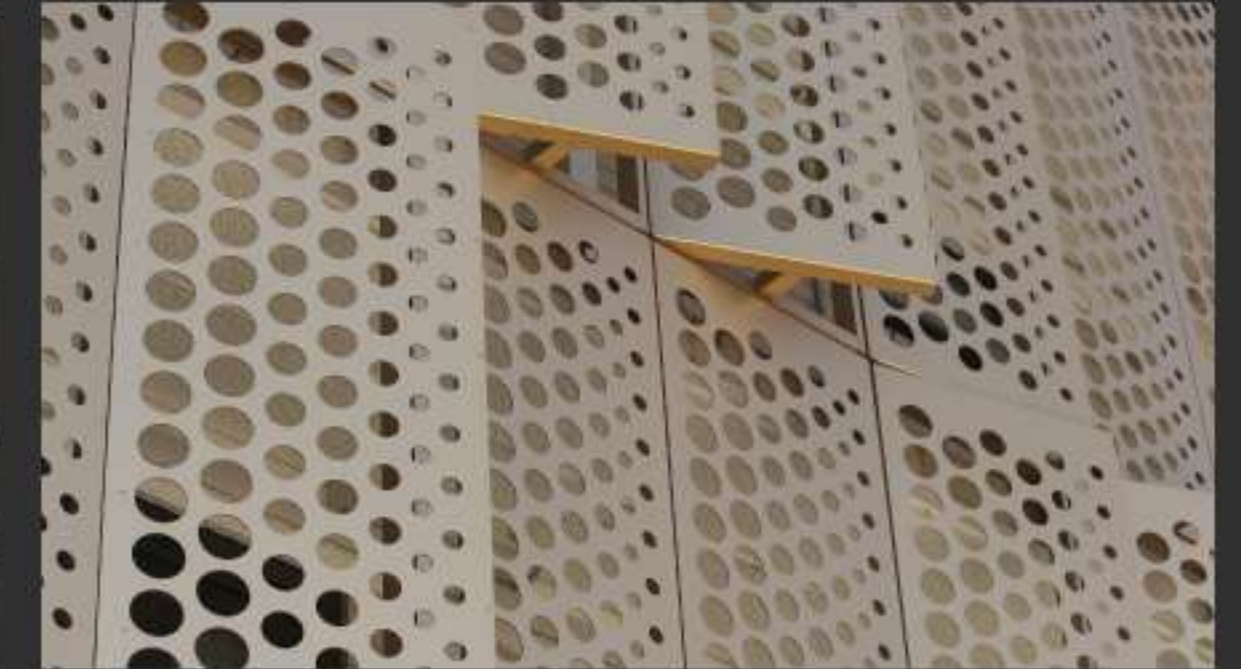
High Performance
Building Materials



LOOVA 3D ROOF



LOOVA EXTERNAL PANEL



LOOVA FAÇADE / PERFORATE



LOOVA INTERNAL PANEL



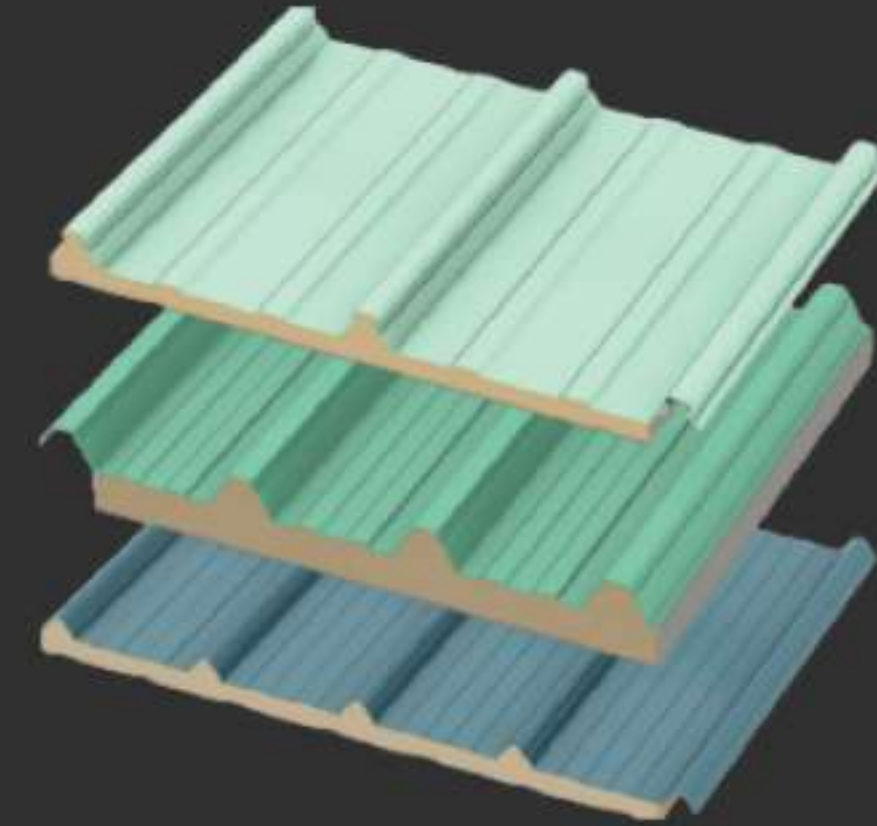
LOOVA INSULATION

OUR PRODUCTS

LOOVA ROOF



High Performance
Building Materials



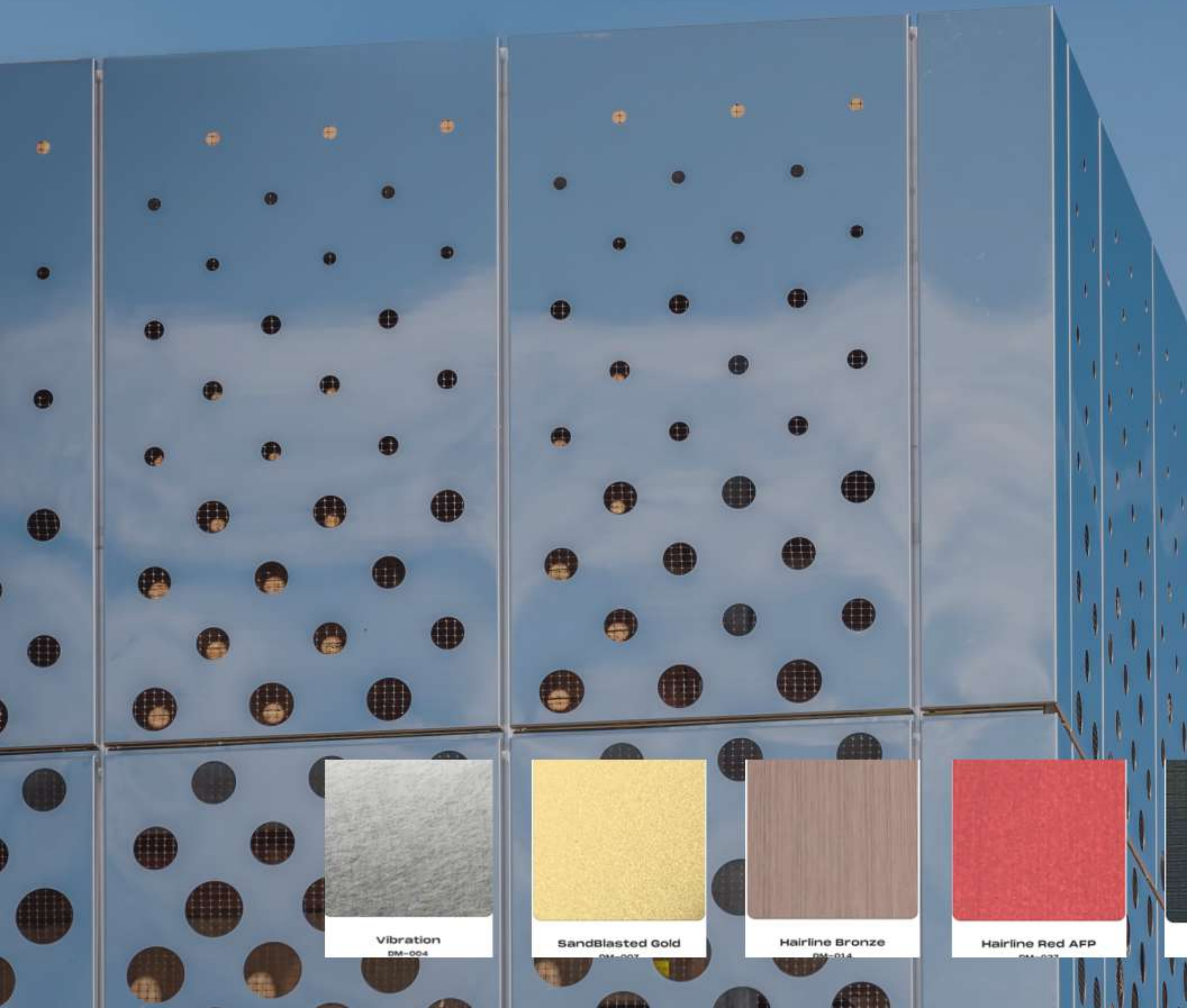
วัสดุเมทัลชีท
Metal Sheet

ฉนวนกันความร้อน
หนา 15 มม. 25 มม. 40 มม. 50 มม.
• PUR FOAM 30K
• PUR FOAM 35K
• PUR FOAM 40K

วัสดุปิดทับ Facing Sheet
• Metal Sheet
• Aluminium Foil Sheet
• PVC Sheet

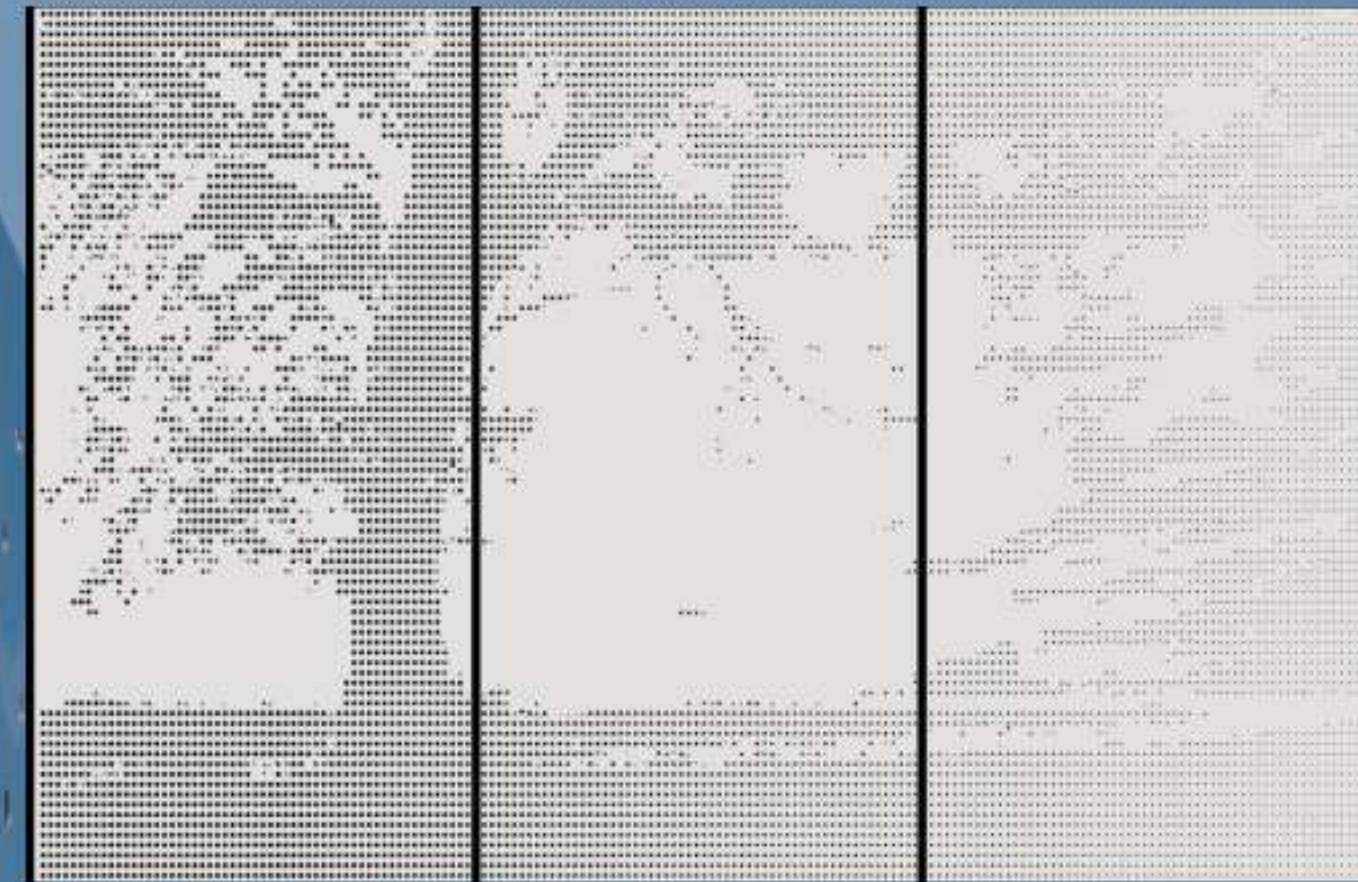
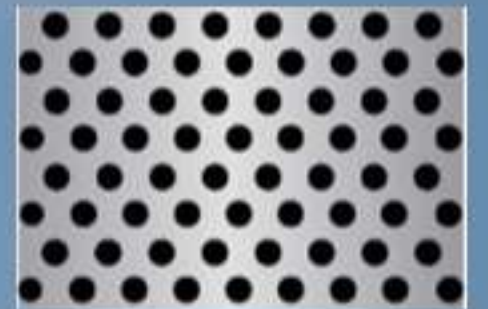
วัสดุปิดทับ Facing Sheet

Aluminium Foil PVC Sheet Metal Sheet

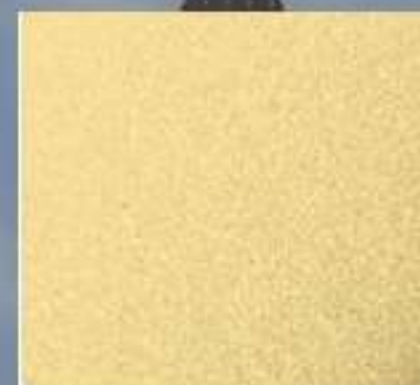


Raw Materials

Perforated metal has various raw materials including carbon steel, stainless steel (302, 304,304L,316,316L), aluminum, copper and brass to be used in different industrial applications.



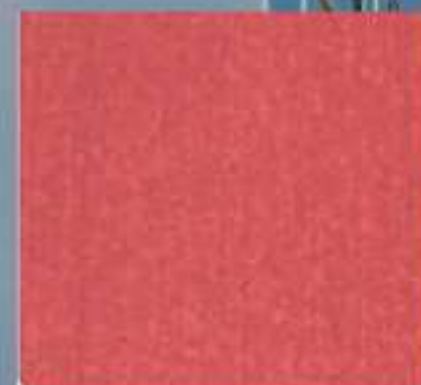
Vibration DM-004



SandBlasted Gold DM-007



Hairline Bronze DM-014



Hairline Red AFP DM-027



Etched black



Antique copper plating



BA Embossed DM-008



Honeycomb (No.4+Gold) DM-061

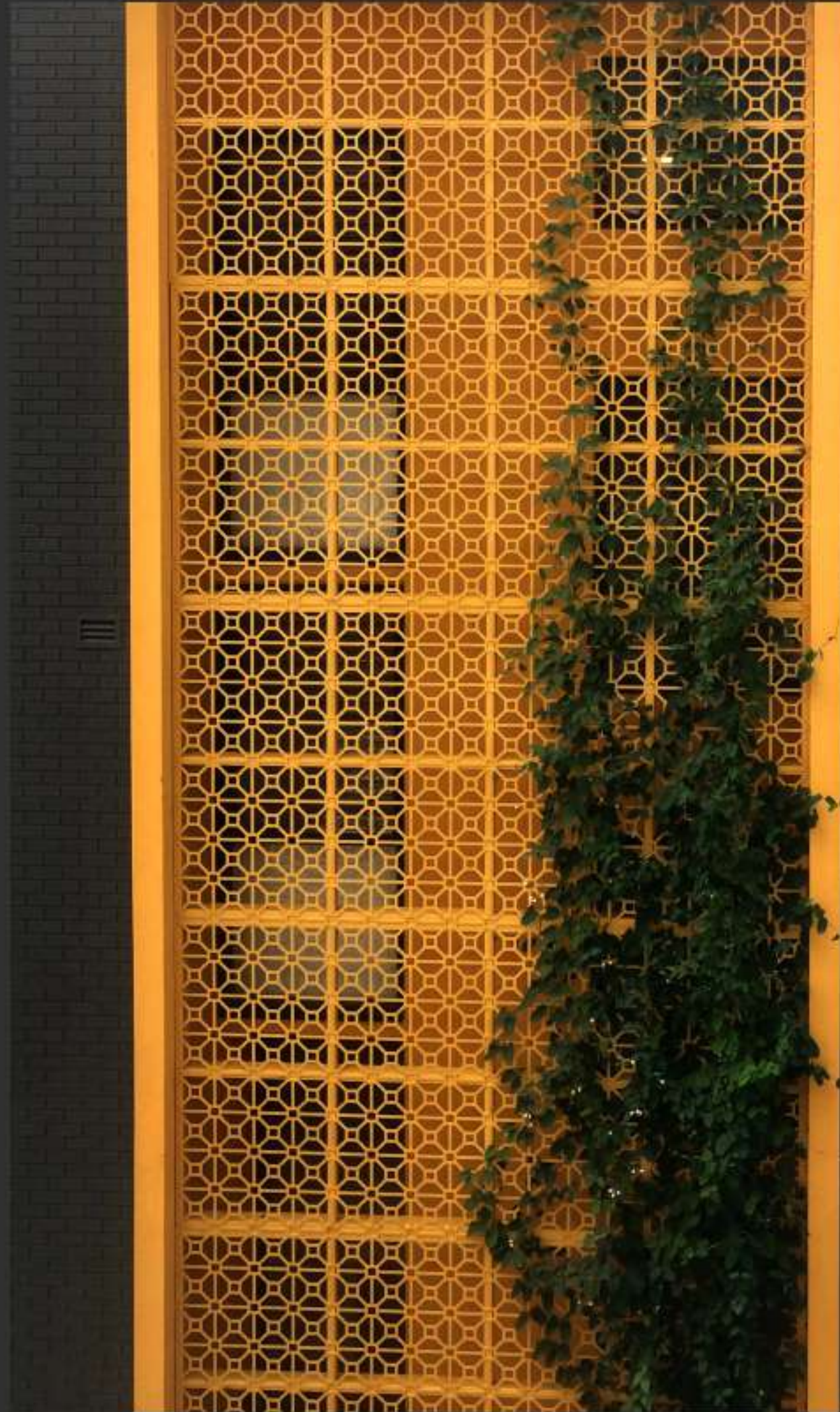
OUR PRODUCTS



FACADE / PERFORATE



High Performance
Building Materials



OUR PRODUCTS

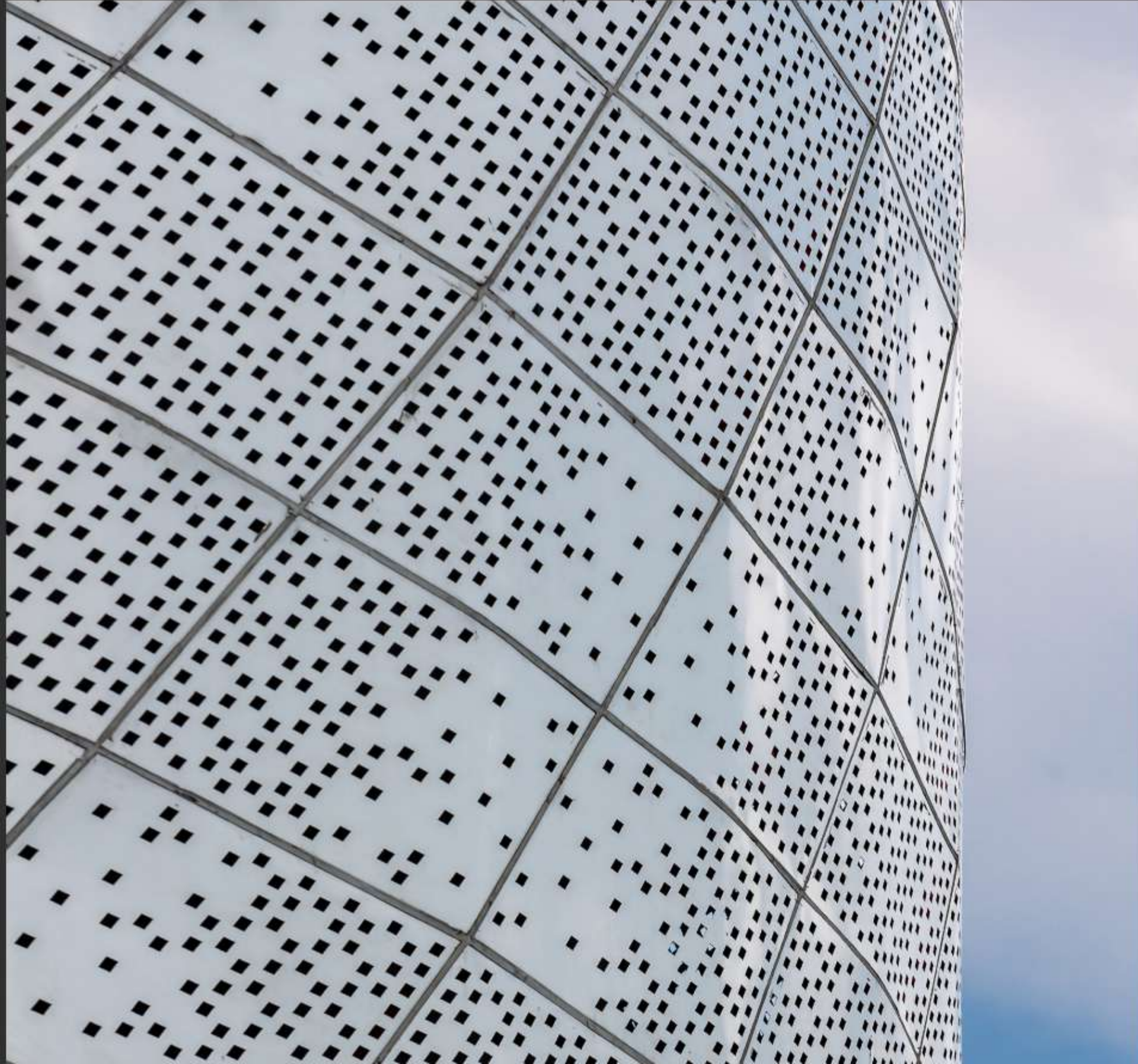


LOOVA

FACADE / PERFORATE



High Performance
Building Materials





Loova Fin Facade can custom the length from 800-2350 mm. suitable for various dimension. Loova Fin also suits for the glass building or other area that need to screen the sunlight into the build in.



PROJECT REFERENCES

PROCESSING ROOM



High Performance Building Materials



Project

Murata Electronics (Thailand) Ltd.

Location : Lamphun

Customer : Thai Toda Corporation Ltd.

Project Scope : External Wall

Area : 1,400m²

PROJECT REFERENCES

PROCESSING ROOM



High Performance Building Materials



Project

Murata Electronics (Thailand) Ltd.

Location : Lamphun

Customer : Thai Toda Corporation Ltd.

Project Scope : External Wall

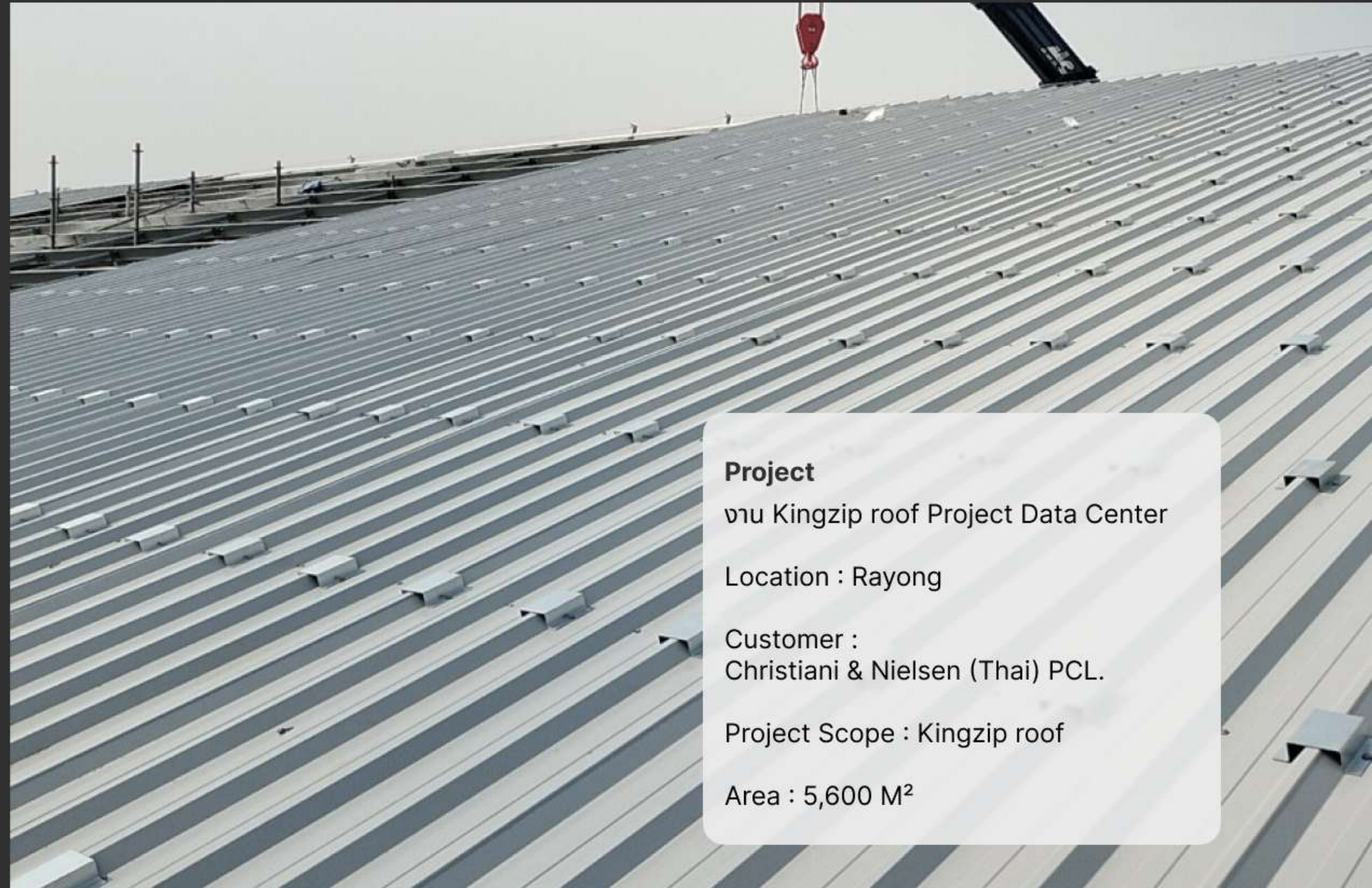
Area : 1,400m²

PROJECT REFERENCES

DATA CENTER



High Performance
Building Materials



Project

งาน Kingzip roof Project Data Center

Location : Rayong

Customer :
Christiani & Nielsen (Thai) PCL.

Project Scope : Kingzip roof

Area : 5,600 M²

PROJECT REFERENCES

DATA CENTER



**High Performance
Building Materials**



Project

งาน Kingzip roof Project Data Center

Location : Rayong

Customer :
Christiani & Nielsen (Thai) PCL.

Project Scope : Kingzip roof

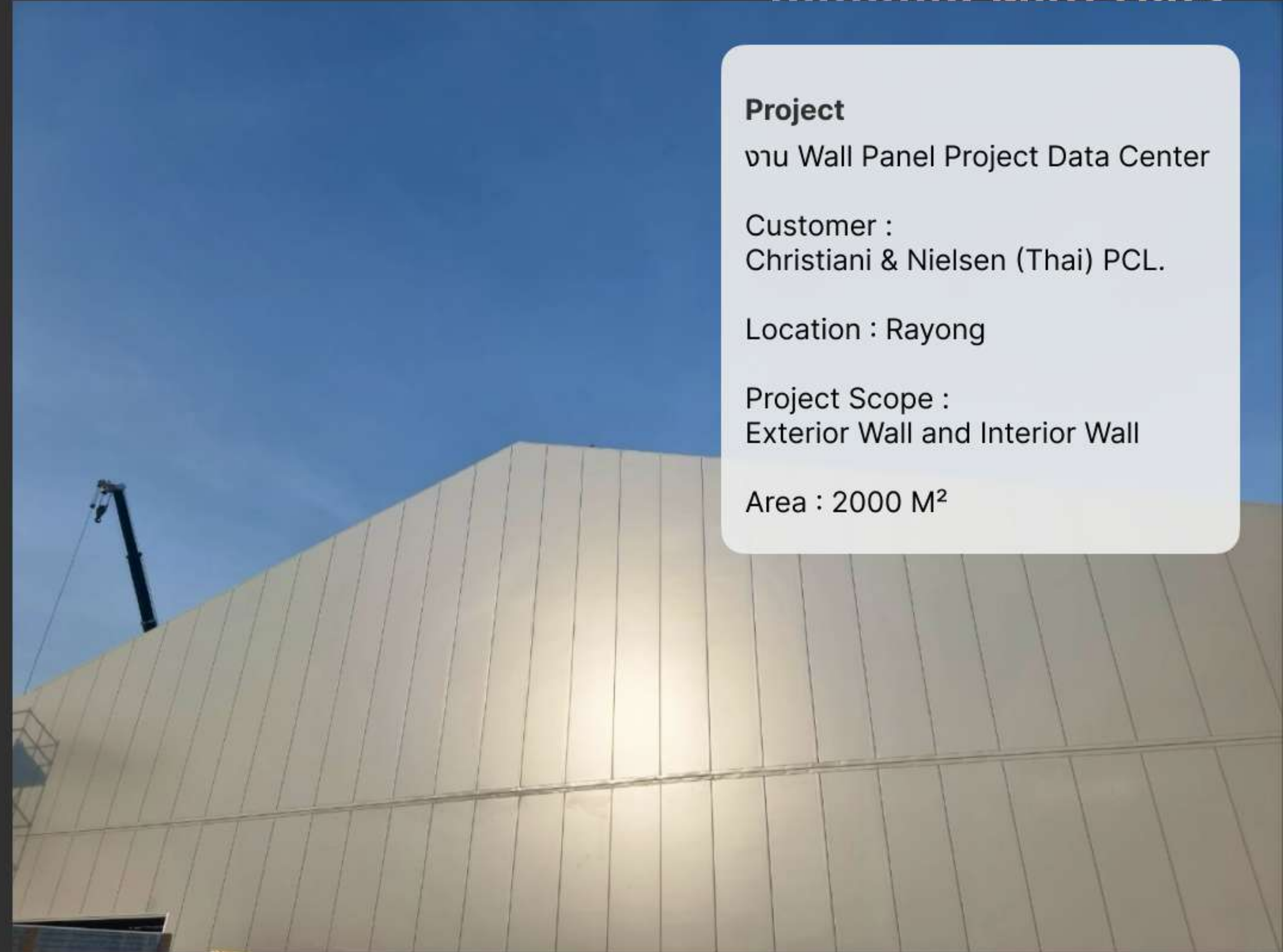
Area : 5,600 M²

PROJECT REFERENCES

DATA CENTER



**High Performance
Building Materials**



Project

งาน Wall Panel Project Data Center

Customer :
Christiani & Nielsen (Thai) PCL.

Location : Rayong

Project Scope :
Exterior Wall and Interior Wall

Area : 2000 M²

PROJECT REFERENCES

DATA CENTER



High Performance
Building Materials



PROJECT: SUPERNAP DATA CENTER
LOCATION: HEMRAJ INDUSTRIAL ESTATE, CHONBURI
CUSTOMER: THAI OBAYASHI
PROJECT SCOPE : ROOF & WALL INSTALLATION

PROJECT REFERENCES

DATA CENTER



High Performance
Building Materials



PROJECT: GENESIS DATA CENTER
LOCATION: BANGNA
CUSTOMER: WILLING MIND CO,LTD



**C.I. GROUP
PUBLIC COMPANY LIMITED
COMPANY PROFILE**